



Micro Commercial Components

Micro Commercial Components  
20736 Marilla Street Chatsworth  
CA 91311  
Phone: (818) 701-4933  
Fax: (818) 701-4939

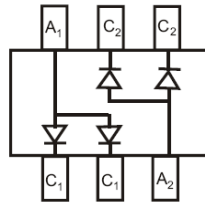
# BAW56DW

## Features

- Fast switching speed
- Ultra-Small surface mount package
- For general purpose switching applications
- High conductance

## Mechanical Data

- Case Material: Molded Plastic. UL Flammability Classification Rating 94-0 and MSL Rating 1
- Marking Code: KJC



## Maximum Ratings

Symbol	Rating	Rating	Unit
$V_{RM}$	Non-Repetitive Peak Reverse Voltage	100	V
$V_{RRM}$	Peak Repetitive Reverse Voltage	75	V
$V_{RWM}$	Working Peak Reverse Voltage		
$V_R$	DC Blocking Voltage		
$V_{R(RMS)}$	RMS Reverse Voltage	53	V
$I_{FM}$	Forward Continuous Current	300	mA
$I_O$	Average Rectified Output Current	150	mA
$I_{FSM}$	Non-Repetitive Peak Forward Surge Current @ $t=1.0\mu s$ @ $t=1.0s$	2.0	A
		1.0	
$P_D$	Power Dissipation	200	mW
$R_{JA}$	Thermal Resistance Junction to Ambient Air	625	$^{\circ}C/W$
$T_J$	Junction Temperature	-55 to +150	$^{\circ}C$
$T_{STG}$	Storage Temperature	-55 to +150	$^{\circ}C$

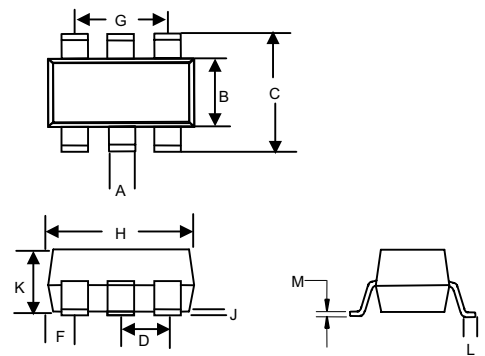
## Electrical Characteristics @ 25°C Unless Otherwise Specified

Symbol	Parameter	Min	Typ	Max	Units
$V_{(BR)R}$	Reverse Breakdown Voltage ( $I_R=2.5\mu A$ )	75	---	---	V
$V_F$	Forward Voltage <sup>(1)</sup>	---	---	0.715	V
	$I_F=1.0mA$			0.855	
	$I_F=10mA$			1.0	
	$I_F=50mA$			1.25	
$I_R$	Leakage Current <sup>(1)</sup>	---	---	2.5	uA
	( $V_R=75Vdc$ )			50	
	( $V_R=25Vdc, T_J=150^{\circ}C$ )			30	
	( $V_R=20Vdc$ )			25	
$C_j$	Junction Capacitance ( $V_R=0, f=1.0MHz$ )	---	---	2.0	pF
$t_{rr}$	Reverse Recovery Time ( $I_F=10mA, I_R=10mA, I_{rr}=0.1 \times I_R$ $R_L=100\Omega$ )	---	---	4.0	ns

\*<sup>(1)</sup> Short duration test pulse to minimize self-heating effect.

## 200mW Switching Diodes 75 Volts

## SOT-363



DIMENSIONS

DIM	INCHES		MM		NOTE
	MIN	MAX	MIN	MAX	
A	.004	.012	0.10	0.30	
B	.045	.053	1.15	1.35	
C	.079	.087	2.00	2.20	
D	.026		0.65Nominal		
F	.012	.016	0.30	0.40	
H	.071	.087	1.80	2.20	
J	---	.004	---	0.10	
K	.035	.039	0.90	1.00	
L	.010	.016	0.25	0.40	
M	.004	.016	0.10	0.25	

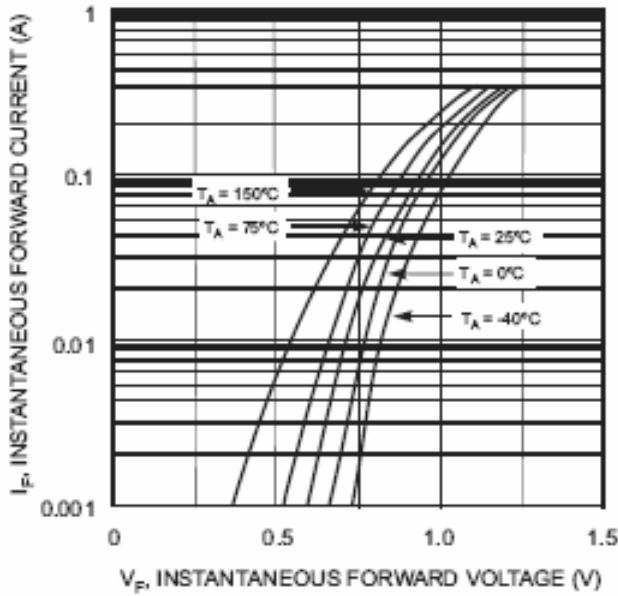


Fig. 1 Forward Characteristics

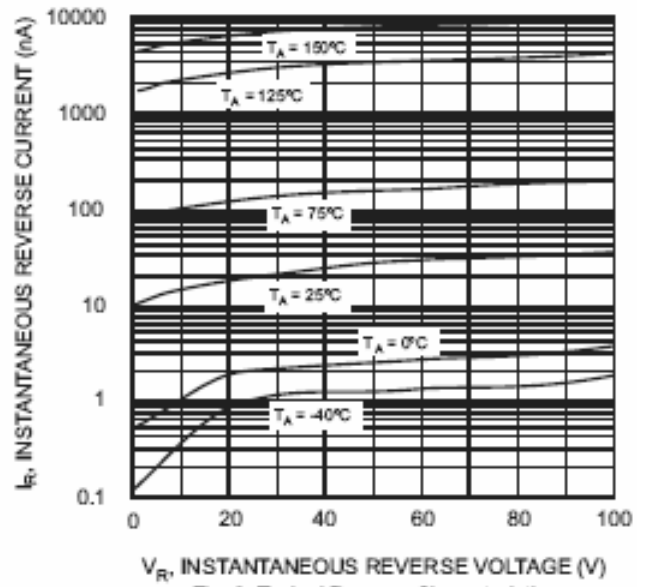


Fig. 2 Typical Reverse Characteristics

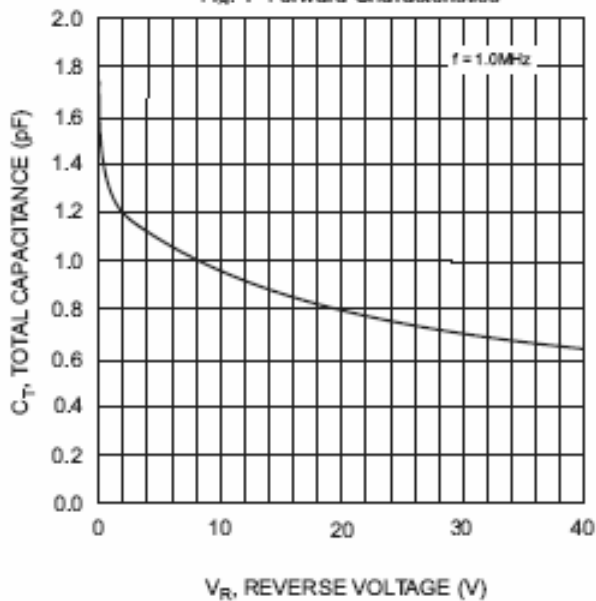


Fig. 3 Typical Capacitance vs. Reverse Voltage

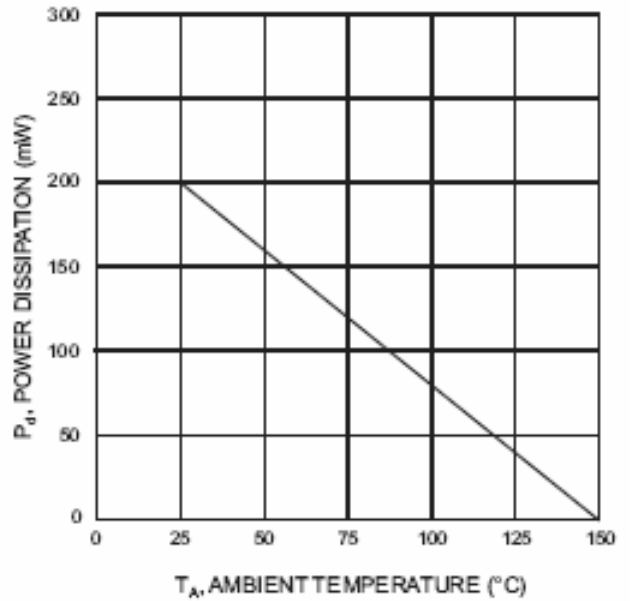


Fig. 4 Power Derating Curve



Micro Commercial Components

## Ordering Information

Device (Part Number)-TP	Packing Tape&Reel;3Kpcs/Reel
----------------------------	---------------------------------

### \*\*\*IMPORTANT NOTICE\*\*\*

*Micro Commercial Components Corp.* reserves the right to make changes without further notice to any product herein to make corrections, modifications, enhancements, improvements, or other changes. *Micro Commercial Components Corp.* does not assume any liability arising out of the application or use of any product described herein; neither does it convey any license under its patent rights, nor the rights of others. The user of products in such applications shall assume all risks of such use and will agree to hold *Micro Commercial Components Corp.* and all the companies whose products are represented on our website, harmless against all damages.

### \*\*\*APPLICATIONS DISCLAIMER\*\*\*

Products offer by *Micro Commercial Components Corp.* are not intended for use in Medical, Aerospace or Military Applications.